



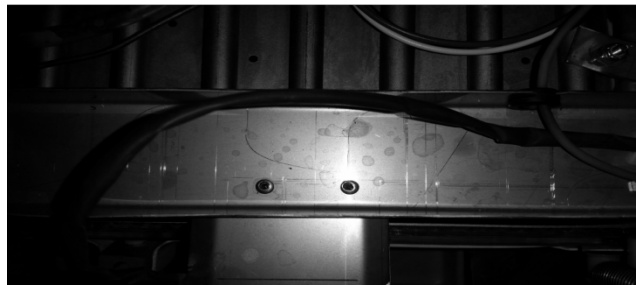
MAGNETIC SWITCH INSTALLATION

DOCUMENT #307 1061 01

**CAUTION! RISK OF PERSONAL INJURY, PROPERTY DAMAGE, EQUIPMENT FAILURE
OR FIRE**

Refer all maintenance to qualified personnel.
Disconnect power before servicing equipment.
Read and understand all instructions before proceeding.

1. Remove the old micro switch and bracket by drilling out the rivets located along the channel above the evaporator plate. Using a 1/8" drill bit



2. Follow the wire to the right side of the grommet in channel to the back of the control box. Cut the wire and remove the switches and bracket.
3. Remove the screw located at the water plate which was used to activate the micro switch.
4. Align the bracket containing the magnetic switch with the holes above the channel and pop rivet it into place.
5. Place the magnet (the one without the wires) onto the location that once had the screw.



6. Run the wire through the left most grommet then along the same channel into the grommet at right side of the channel leading behind the control box and connect the wires with the other wires that were cut which go into the control box.